

Volume 13

Summer 2010 Edition

GOING TO
GROUND
SCJRTC NEWSLETTER



SCJRTC Board of Directors

Jo Paddison.....President.....foxtlocks@aol.com
Sam Hummel.....Vice President....lhummels2@aol.com
Lysa Hummel.....Secretary.....lhummels2@aol.com
Vacant.....Treasurer.....

Permanent Board Members

Michelle Davies.....runamukjr@att.net
Donna M. Curnow.....doda2005@msn.com

Club Chairs

<u>Racing</u>	<u>Go-to-Ground</u>	<u>Agility</u>	<u>Obedience</u>	<u>Child / Youth</u>
Bob Jones	Janine McClure	Brian Bennett	Pam Greenhalgh	Bree Beery
<u>Co-Racing</u>	<u>Co-GTG</u>	<u>Ribbons/ Awards</u>	<u>Hospitality</u>	<u>Raffle</u>
Brad McClure	Melanie Calero	Jo Paddison	Pam Greenhalgh	Lysa Hummel
<u>MC</u>				
Bob Greenhalgh				

<u>Games</u>	<u>Newsletter</u>	<u>Webmaster</u>
Didi Gough	Sam Hummel	Lysa Hummel
Marni Ticker	lhummels2@aol.com	lhummels2@aol.com

JRTCA State Representatives

Bree Beery760-789-5606.....bree@breezymeadowsjrt.com
Sam Hummel.....760-807-1664.....lhummels2@aol.com

ABOUT OUR CLUBS

NEWSLETTER

Sam Hummel, Editor
760-751-9311
gotjack@gotjack.net

Going To Ground is published by the South Coast Jack Russell Terrier Club, which is an affiliate club of the Jack Russell Terrier Club of America, Inc.

We encourage members or subscribers to submit relevant stories, articles, pictures or artwork. We prefer stories or articles to be sent via mail or by email. If you have photos that you want to share with our members you send them in JPEG format to the newsletter editor or to be published on the SCJRTC website send them to the webmaster at lhummels2@aol.com. They will be placed in the members photo section of the clubs website.

Remember that each article or story is subject to editing for content, clarity, length and to comply with the JRTCA affiliate agreement.

The Purina Incredible Dog Challenge **June 12, 2010**

I would like to be the first person to congratulate all that participated in this years Purina Incredible Dog Challenge. For those did know, after our trial in April 2010, we took all the Champion and Reserves from the racing classes on both days and invited them to compete this year in Del Mar at the San Diego Fair Grounds. Which made for some great terrier racing. And made the club a little money for our participation. I want to thank my wife Lysa for taking over the planning and organization of this event for me while I had to be out of town. He did a great job getting all the participants together and making sure we had enough terriers to fill all the heats.

With that said, I would like to congratulate the winners:

Second Runner-up: Boddy Road

Owned by Ron and Pam Haar

First Runner-up: Promised Land Egypt

Owned by Glen and Deanna Gillette

**And the 2010 Purina Incredible Dog Challenge, Terrier Hurdle Racing
Champion**

Seaview Soulman

Owned by Brad and Janine McClure

ATTENTION MEMBERS

Don't forget to renew your memberships with the SCJRTC and the JRTCA. They are due soon for the 2010 season. Also, Breeders, don't forget to sign a your Breeders Code of Ethics for 2010. Breeders: Sign the BCOE and send a copy to the JRTCA Club Office and a copy to the SCJRTC Secretary, Lysa Hummel.

SCJRTC Spring Fox Frolic I & II

The SCJRTC Spring Fox Frolic Trial came and went. We had a great turn out for first, two day trial in almost 3 years. At the end, we counted and had over 190 terriers entered. And almost 700 classes entered for both days. After expenses, the trial made the club over \$3000. Not a bad weekend at all. We want to thank our judges, John

Broadhurst, Tressie Cowen, Alicia Escobedo, Coleen Reeder, Denise Williams and Gary Kelley for the great job they all did. We really would like thank to Michelle Davies for stepping up and standing in as one of our conformation judges. Kevin Allen, from England, was supposed to judge on Sunday, but because of the volcano erupting and sending an ash cloud over England, he was unable to fly out and make our trial. So, Michelle agreed to stand in and help us out. Without her, we wouldn't of had a conformation judge for Sunday.

The weather was great for a trial. It was sunny with a light breeze which made it a great weekend. The trial site was awesome. We the use of 30 acres at the Bates Nut Farm here in Valley Center, which is 30 minutes North of Downtown San Diego. The conformation ring and brush hunt was under some huge Oak trees which kept them covered in shade and pretty cool for the weekend.

Racing and GTG were in the open, but both went off without a hitch. Our racing Champions and Reserves were all invited to compete in this years Purina Incredible Dog Challenge at the San Diego Fair Grounds in June. So, congratulations to those winners. Also, I would like to congratulate, Hi-Hi Skippio for winning the Breezy Meadows Cabela Memorial Racing Trophy.

We also want to thank everyone that helped out, Jo Paddison, Debra Howe, Melanie Lopez, Colleen Groce, Connie Mckee, Susi Laswell, Gary and Dawn Kelley, the Bowermens, Bob and Sharon Jones, Lisa Renfro, Kelly Finn, Jill Jones, The Cotrez family, Ken Saunders, Kathy Sube and Russell Rescue, Colleen Reeder, Erin Schwartkoff and Brian Bennett. Without these folks helping out, the trial would not have been as successful at it was.

Plans are the way for next years Spring Fox Frolic, so we hope to see everyone there. And look for the trial results on the SCJRTC website.

Terror in the Pines I&II

Flagstaff, AZ
May 29-30, 2010

Well, we made the long and argues journey to Flagstaff this to support and judge the Terror in the Pines trial held in benefit to the Arizona Russell Rescue. The trial was held at the Flagstaff Equestrian Center, a wonderful site. The racing track and lure coursing were set up in a huge arena. The GTG and Super Earth were within walking distance from the conformation ring. And the tunnels were buried under pine needles. Which were both under some nice shady pine trees. Made it nice for judging. Barn Hunt was held in a horse a spacious stall and ran by Janet Krum, who also provided the GTG tunnels. The Conformation Ring was actually a covered round pen, used for exercising horses. Which was nice because there was only one way in and one way out, and made it easy for the ring steward to make sure everyone was accounted for.

But the trip was nice and we had a good time. Our terrier, Owl Canyon Lincoln on Saturday was Best Open Dog and Reserve Open Terrier. And on Sunday, Hart Farms Kimber was Under Champion GTG. Lincoln was beat by his daddy in Conformation on Sunday.

I believe Dawn Kelley cleaned house both days in the Working Division. The Gillette's had a good weekend by taking home some Champion and Reserves in GTG and Super Earth. Plus, at the end, we had time to work with some pre-novice puppies, to get them started in the tunnels and on the rats.

After the trial on Sunday, were treated to some good BBQ Buffalo steaks by the Reeder's. On Monday, following the trial, Me, Jen Elsner, Mal McEwen, Colleen Reeder, Gary Reeder and Debra Howe's husband were given one of the best judges gifts I have received yet. The Reeder's took us all out for some time on the shooting range, to shoot some of their custom handguns. I had so much fun, I bought one. With the wife's permission of course.

But we a great time and look forward to the trial next year.

California Russell Rescue

Kathy Sube and all her volunteers have several terriers that need a forever home, plus they need donations to help them provide these terriers with vet care, training and basic needs such a food. So, if you know anyone that is looking for a pet and is interested in rescuing a terrier in need, please contact Kathy Sube at russellrescuesoca@gmail.com

Ten Common Plants That are Poisonous to Dogs A List of Familiar Plant Species Which are Toxic When Consumed Aug 7, 2009 Sarah Smith

This article will educate one about ten common plants that cause harm to dogs when eaten. Did you know that Avocados and Aloe Vera are toxic to dogs?

Many are unaware that there are countless species of plants—both houseplants and outdoor plants—that are poisonous to dogs. Dogs are stereotyped by sniffing, chewing, and eating almost everything; especially as puppies. For this reason, it is not uncommon for veterinarian hospitals to treat dogs that have eaten a poisonous plant or bulb.

The following article will identify and quickly describe ten plants that are poisonous to dogs so one may be more conscious of what the dog munches on.

- 1.** Aloe Vera is a common houseplant that is very poisonous to dogs. If consumed; the dog will vomit, refuse to eat, and may experience tremors.
- 2.** Tulip bulbs are extremely toxic to canines; therefore care must be taken when storing extra bulbs and while planting. If one owns a dog that likes to dig; tulip bulbs should be planted in an area that the dog is not allowed or cannot reach.
- 3.** The fruit and skin of the Avocado is extremely poisonous to dogs as well as cats and horses. The entire Avocado tree is toxic to dogs and a concerned owner should not expose their animal to any part of it.

4. The Daffodil's bulb, flower, leaves and stem are all poisonous to dogs; however, the bulb is the most poisonous part. Take care in storing bulbs and make sure not to plant in an area that may be dug up.

5. The Easter Lily is a popular flower that blooms near Easter and is often given as a gift around Easter time. This plant is beautiful and fragrant but it is also extremely poisonous to dogs. Death may occur if even the smallest amount of the plant is consumed.

6. Holly is an attractive bush that produces clusters of small red berries during fall. It is poisonous to dogs, however; its leaves are sharp. The sharp leaves make Holly a threat mainly during fruiting season because the berries are usually the alluring part of the plant.

7. The annual climbing plant 'morning glory' is a popular choice for trellis's and arbors. However, the plant contains four toxic chemicals which cause hallucinations, disorientation as well as diarrhea. The seeds of the morning glory have the potential to be the most dangerous and should be kept from dogs.

8. The over 250 species of Rhododendrons are spread throughout the world and all of them are toxic to dogs. The majority of animals that consume any part of the rhododendron plant die.

9. Every part of the Taro plant (*caladium hortulanum*) is toxic to dogs because it contains calcium oxalate crystals which cause intense burning to the dogs mouth as well as drooling and vomiting.

10. The Rhubarb plant is known by humans for its tart flavor and ability to produce delicious pie and jelly. Although it is appetizing for people, it should not be fed to a dog because consumption results in kidney failure and tremors.

BREEDER DIRECTORY

CASTLEREIGH

Rebecca Quick
Llano, CA
(661) 261-1966
rjquick2001@yahoo.com
www.Castlereighkennels.com

DIGGIN' WEST

Dawn Kelley
Madera, CA
(559) 664-0214
Dawn@digginwest.com
www.digginwest.com

FOXTON LOCKS

Jo Paddison
Orange, CA
(714) 633-0294
foxtonlocks@aol.com

GLENWOOD

Cheryl Costello
Grants Pass, OR
glenwoodpet@q.com

IVY HILL

Chris and Gretchen Bowerman
Las Vegas, NV
702.275.2557 M
702.468.6848 M
ivyhilljrts@gmail.com
www.ivyhillterriers.com

KIMBERLITE

Barry Cilliers & Alison Jo Cook-Cilliers
Hayward, CA
(510) 583-1053
Cilliers@aol.com
http://kimberlitejackrussellterriers.blogspot.com/

RUNAMUK

Michelle Davies
Eagle Point, OR
(541) 826-8901
runamukjr@att.net
www.runamukjrt.com

SEAVIEW

Didi Gough
Laguna Beach, CA
(949) 497-2661
DidiG@aol.com
www.seaviewjrt.com

PROMISED LAND

Glen & Deanna Gillette
Apple Valley, CA
(760) 247-0326
PromisedLandRussellRanch@verizon.net
www.PromisedLandRussellRanch.com

SHARPSHOOTER

Barbara Cutolo
North Las Vegas, Nv
Sharpshooterjrts06@yahoo.com

BUNKER HILL

Brad & Janine McClure
Los Alamitos, CA
janinemcclure@yahoo.com
www.bunkerhillterriers.com

MOCKINGBIRD JACK RUSSELL'S

Marcia Wicks
Riverside, CA
(951) 780-4542
(951) 515-1274

Affiliate News

Gunnison Grand Western Terrier Trial V & VI

July 3rd and 4th, 2010
Fred Field Western Heritage Center
Gunnison, Colorado

For more info, contact
Sue Anne Wilson at gunnisonjrtrial@q.com

Rainier Hunt XV & XVI

August 14th & 15th, 2010
Sweetgrass Farm
Everson, Washington

For more info, contact
Sherri Rossmiller at
sherri@sweetgrassterriers.com

Cowboy Classic IX & X

September 4th and 5th, 2010
Wyoming State Fairgrounds
Douglas, Wyoming

For more info, contact
Erin Schwartzkopf at
cowboyclassictrials@fastmail.fm

Diggin West Challenge XV & XVI

October 9th & 10th, 2010
Madera Fair Grounds
Madera, California

For more info, contact
Dawn Kelley
dawn@digginwest.com

If you are looking to adopt a Jack
Russell Terrier or need to place a dog, make
sure you visit Russell Rescue!

It's a great place with great
information on how to give a dog a forever
home. There are many out there that would
make great pets if given the chance. Visit the
website at

www.russellrescue.com

SCJRTC Membership Benefits

Members only web page
Reduced entries for SCJRTC Trials
Online Newsletter
Free Breeders listing (code of ethics signature required)

Membership Applications available online at: www.scjrtc.com
**If you are interested in joining the JRTCA visit www.terrier.com to download a
membership application**

WHAT TO EXPECT IN THE NEXT ISSUE OF
GOING TO GROUND
Stories from the Field

The SCJRTC

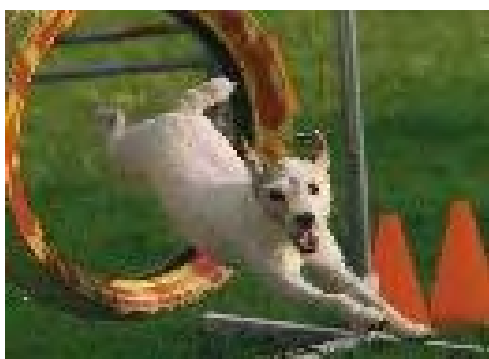
Is now on FACE BOOK!

Search for "Sam and Lysa Hummel", go to our groups, and click on the SCJRTC and request to be a member

Marketplace



Visit us at: www.gotjack.net
for gifts and Deben products



Pawsitive Principles Dog Training
Obedience-Rally-Agility
www.pawsitiveprinciples.com



Glenwood Pet Products
www.glenwoodpet.com



And Don't Forget to visit the JRTCA's on-line store at:
www.terrier.com/newstore
For new great terrier gifts and equipment!